

U.S. CONSULATE GENERAL MATAMOROS, MEXICO

PROJECT FACT SHEET



Design Architect Richärd + Bauer Architecture

Architect of Record PAGE

General Contractor BL Harbert International

Site 7.6 acres

Total Project Budget \$180 million

DESIGN AND CONSTRUCTION

- The building design was based on a vision for the new Consulate General that would benefit visitors, improve collaboration and effectiveness in carrying out our work, incorporate our building security and resiliency requirements, convey our values of openness and transparency, and be in harmony with the local environment.
- The design developed by the architectural team embraces traditional regional architecture. The signature element of the project is the latilla shade canopy. This open lattice canopy provides an amenity for consular visitors and enhances the building's energy performance.
- The latilla provides an open, receptive and welcoming edge to the campus. It defines functional outdoor rooms, provides shade for consular and diplomatic functions, and gives a sense of openness and permeability to the new facility.
- The landscape design features extensive native plantings and storm water management features inspired by the local Resaca waterways.
- Through the new Consulate General project, constructed between 2016 and this year, 1,375 workers – of which nearly 95 percent were Mexican – invested more than 2 million work hours in the project, contributing significantly to the local economy.

SUSTAINABILITY

- The project is registered with the U.S. Green Building Council for Leadership in Energy and Environmental Design (LEED®) certification and is projected to receive LEED® -Gold certification.
- The project was designed to harvest and store rainwater to serve nearly all irrigation demands, reducing the demand on local potable water supply systems.
- Low flow plumbing fixtures are used, allowing the buildings to consume a projected 30-40% less water than a typical building built to U.S. building codes.

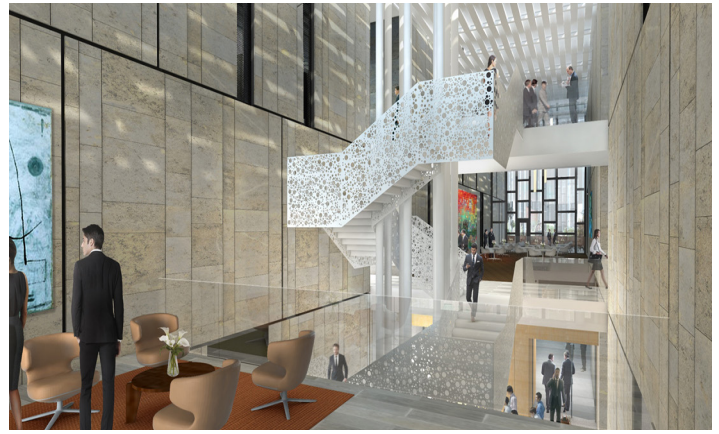
- The building was designed with energy efficient lighting and mechanical systems with energy savings projections of 20-30% below a typical building built to U.S. building codes.

ART

- To promote cross-cultural dialogue and mutual understanding, the permanent art collection, curated by the Office of Art in Embassies, features works in a variety of media – fiber, clay, photography, paint, paper - by artists from both the United States and Mexico. Each piece was carefully selected or commissioned for its ability to engage, educate, inspire, and build connections among people.
- Highlights of the collection include artist Joel Allen’s dramatic grouping of suspended fiber sculptures in the lobby entrance. Pia Camil’s monumental work, in similar dialogue with the soaring architecture of the building’s atrium, draws inspiration not from nature but from urban and industrial landscapes. These works and others reflect a nuanced understanding of U.S. and Mexican cultural heritage. They celebrate these cultural connections while relating to themes commonly explored by contemporary artists in both countries. Meghan Sebold



Exterior



Consular

CONTACT INFORMATION

Kelly McCray

Consular Officer

McCrayKM@state.gov

Meghan Sebold

OBO Director of External Affairs

OBOExternalAffairs@state.gov